

BOBBY

NASHVILLE

Explore Music City

LOOK NO FURTHER, YOU'VE FOUND THE SPOT

Centrally located in the city's layered and diverse Art's District and nestled next to historic Printer's Alley, Bobby Nashville invites you to make yourself at home in its 144 thoughtfully appointed guest rooms and suites.

Let Bobby be your guide to the creative Southern energy of Nashville.



Union Tavern

Kick Back & Dig In

FOOD + DRINK

Start your morning off with a local brew at Café at Bobby, join our table for a delectable meal at Union Tavern, have drinks in the back of a 1956 retrofitted Greyhound bus under the stars at Rooftop Lounge, or unwind with a nightcap at Garage Bar. We've got something for every occasion.

Get Inspired

HAPPENINGS

Inspiring from the moment you arrive - start with a warm welcome from our dog-in-residence and ever-changing art exhibits by The Collection. Uncover your next music obsession at our summer Backyard Sessions or celebrate the holidays with breathtaking views of the city from Camp Bobby, all situated 10 stories above the Nashville skyline. Bobby Nashville offers somewhere to begin or end your day, ensuring there's always a place to call home.



Backyard Sessions



Camp Bobby



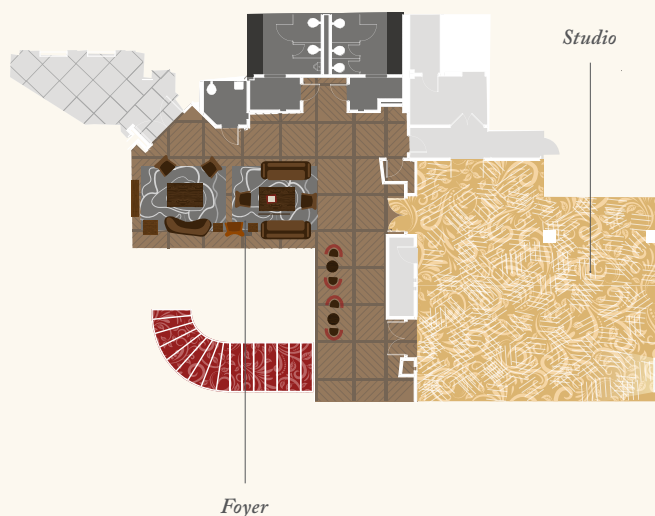
The Foyer

Special Events

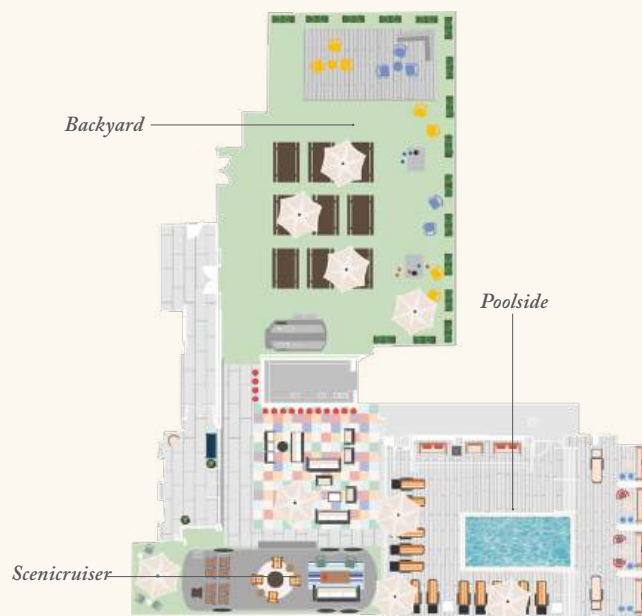
GATHER + DISCOVER

Bobby Nashville knows how to host a great meeting or event. You'll find over 9,500 sqft of adaptable event space featuring an outdoor rooftop, boardroom, penthouse suite, and private dining room, ready for you're next product launch, record deal signing, crew celebration, or summit.

2nd Floor, Studio & Foyer



Rooftop Lounge



| Event Space | SQ FT | Room Size | Ceiling | Classroom | Theater | Banquet 8 | Banquet 10 | Reception | Conference | U-Shape | H-Shape |
|---------------------|-------|-------------|---------|-----------|---------|-----------|------------|-----------|------------|---------|---------|
| Boardroom | 252 | 21 x 1226 | 9' | - | - | - | - | - | 10 | - | - |
| Studio | 1,727 | 44 x 45 | 9' | 84 | 120 | 88 | 110 | 120 | 32 | 36 | - |
| Studio I | 819 | 43 x 21.1 | 9' | 18 | 36 | 40 | 40 | 40 | 14 | 16 | - |
| Studio II | 907 | 43 x 16 | 9' | 44 | 70 | 50 | 60 | 75 | 32 | 32 | 42 |
| Studio Foyer | 1,557 | 53 x 46 | 9' | - | - | 48 | 50 | 75 | - | - | 22 |
| Bobby's Garage | 398 | 39.8 x 10 | 7' | - | - | - | - | 35 | - | - | - |
| Cafe at Bobby | 2,030 | 41.1 x 49.4 | 10' | - | - | 40 | 40 | 50 | 20 | - | - |
| Two-Bedroom Suite | 1,800 | - | 9' | 10 | - | - | - | 35 | 10 | - | - |
| Rooftop Lounge | 6,569 | - | - | - | - | 128 | - | 300 | - | - | - |
| Rooftop Backyard | 3,545 | - | - | - | - | 88 | - | 120 | - | - | - |
| Rooftop Poolside | 3,024 | - | - | - | - | - | - | 125 | - | - | - |
| Scenicruiser | - | - | 9' | - | - | - | - | 40 | 12 | - | - |
| Union Tavern | 3,800 | - | 9' | - | - | 85 | - | 200 | - | - | - |
| Private Dining Room | 465 | 26 x 19 | 9' | 22 | 34 | 24 | 20 | 30 | 18 | 16 | - |



BOBBY NASHVILLE

6569Sq. Ft.

ROOFTOP LOUNGE EVENT SPACE

Elevate your event at Rooftop Lounge, where up to 300 guests can enjoy yard games and specialty cocktails against the backdrop of Nashville's stunning downtown views or celebrate in a one-of-a-kind 1956 Scenicruiser. The perfect venue for any occasion aiming to have a little extra fun!



RIVERSIDE ROOFTOP

- Unique, rooftop space
- Accommodates up to 86 guests in existing seating or 150 reception style
- Views of Nissan Stadium + city skyline Backyard games, stage, LED screen package, and more available for event elements
- Seasonal programming

SCENIC BUS

- Private + semi-private space
- Accommodates up to 20 guests, with patio space up to 40 guests
- Perfect for celebrations

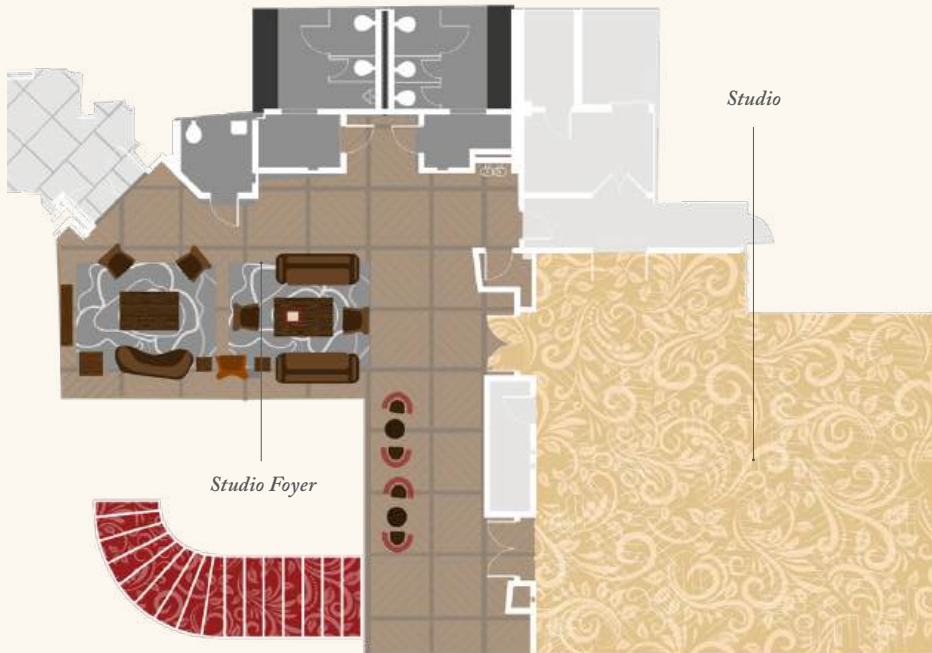
| Event Space | SQ FT | Ceiling | Banquet 8 | Banquet 10 | Reception | Conference |
|------------------|-------|---------|-----------|------------|-----------|------------|
| Rooftop Lounge | 6,569 | - | 128 | 140 | 300 | - |
| Rooftop Backyard | 3,545 | - | 88 | 100 | 120 | - |
| Rooftop Poolside | 3,024 | - | - | - | 125 | - |
| Scenicruiser | - | 9' | - | - | 40 | 12 |



3284 Sq. Ft.

STUDIO + FOYER

Studio + Foyer, located on the second floor, offers dedicated meeting and event spaces ideal for intimate gatherings of up to 120 people. Infused with Bobby Nashville's creative energy, they are the perfect backdrop for your next summit, reception, milestone celebration, or product launch!



- Exclusive space on 2nd floor
- Adorned by The Collection, our rotating art exhibition curated by Tinney Contemporary
- Features a drop-down screen projector, + natural light

| Event Space | SQ FT | Room Size | Ceiling | Classroom | Theater | Banquet 8 | Banquet 10 | Reception | Conference | U-Shape | H-Shape |
|--------------|-------|-----------|---------|-----------|---------|-----------|------------|-----------|------------|---------|---------|
| Studio | 1,727 | 44 x 45 | 9' | 84 | 120 | 88 | 110 | 120 | 32 | 36 | - |
| Studio I | 819 | 43 x 21.1 | 9' | 18 | 36 | 40 | 40 | 40 | 14 | 16 | - |
| Studio II | 907 | 43 x 16 | 9' | 44 | 70 | 50 | 60 | 75 | 32 | 32 | 42 |
| Studio Foyer | 1,557 | 53 x 46 | 9' | - | - | 48 | 50 | 75 | - | - | 22 |



4265 Sq. Ft.

UNION TAVERN + PRIVATE DINING

Union Tavern, located directly past Bobby's Lobby in the heart of Nashville's Art District, offers a warm, inviting wood and art-adorned space. Perfect for seated dinners of up to 85 guests or receptions for up to 200. The casual dining and gathering spot is ideal for culinary-focused celebrations and meetings.



UNION TAVERN

- Convenient first floor location with natural light
- Upscale dining experiences or welcome receptions
- Accommodates up to 85 guests in existing seating or 200 reception
- Offers an additional space for groups to dine or meet

PRIVATE DINING

- Overlooks historic Printer's Alley
- Accommodates up to 30 guests
- Perfect for board meetings/ breakouts

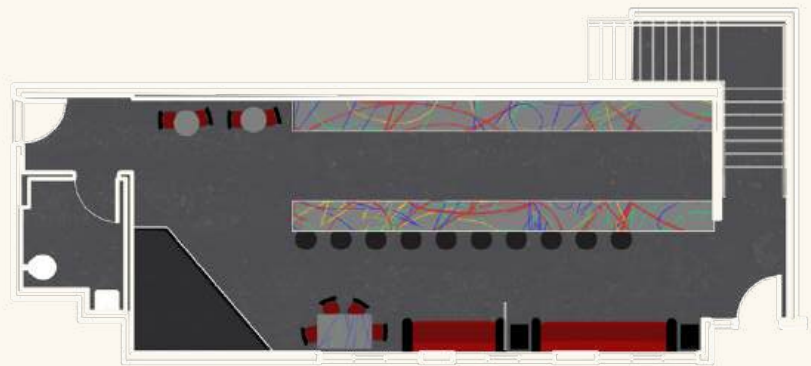
| Event Space | SQ FT | Room Size | Ceiling | Classroom | Theater | Banquet 8 | Banquet 10 | Reception | Conference | U-Shape |
|---------------------|-------|-----------|---------|-----------|---------|-----------|------------|-----------|------------|---------|
| Union Tavern | 3,800 | - | 9' | - | - | 85 | - | 200 | - | - |
| Private Dining Room | 465 | 26 x 19 | 9' | 22 | 34 | 24 | 20 | 30 | 18 | 16 |



398 Sq. Ft.

GARAGE BAR

Our gritty dive bar, Garage Bar, is just off the historic Printer's Alley and is the perfect venue for hosting a lively celebration or sparking creativity. Leave your mark on its graffiti-covered walls while enjoying an unforgettable night!



- Intimate performance space with stage + sound
- Creative breakout space
- Perfect for songwriting and creative sessions
- Late-night or after-hours venue

Event Space

SQ FT

Room Size

Ceiling

Reception

Bobby's Garage

398

39.8 x 10

7'

35



2,030 Sq. Ft.

CAFÉ AT BOBBY

Our European-inspired café on the ground floor offers a vibrant space with a cozy indoor seating area and an airy patio, perfect for any gathering. Whether planning an indoor or outdoor soirée, this charming café provides an inviting and intimate venue.



- Indoor + outdoor versatility
- Private / semi-private
- Street ambience + entrance Built-in bar + cafe tables
- Convenient + visible welcome space for guest arrivals

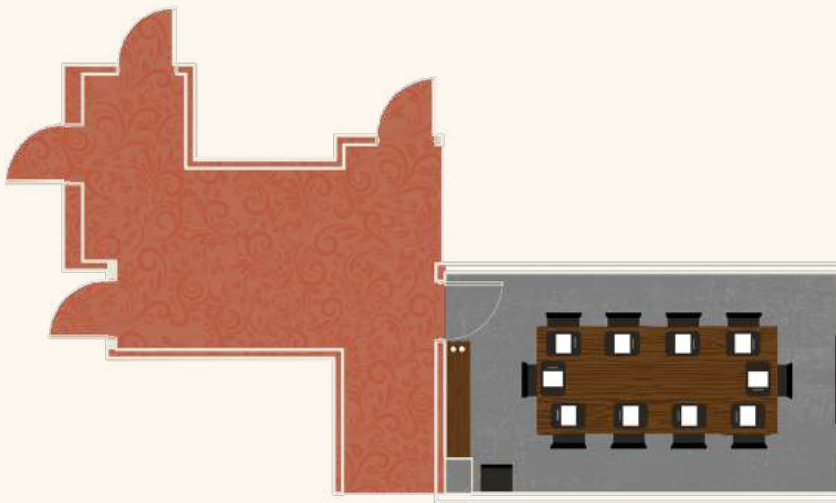
| <i>Event Space</i> | <i>SQ FT</i> | <i>Room Size</i> | <i>Ceiling</i> | <i>Banquet 8</i> | <i>Banquet 10</i> | <i>Reception</i> | <i>Conference</i> |
|--------------------|--------------|------------------|----------------|------------------|-------------------|------------------|-------------------|
| Cafe at Bobby | 2,030 | 41.1 x 49.4 | 10' | 40 | 40 | 50 | 20 |



252 Sq Ft

BOARDROOM

Our 10-seat executive boardroom, tucked away on our 4th floor, offers an intimate and private space perfect for getting down to business.



- Seats 10 guests
- Executive appointments including leather chairs, custom blotters
- Ideal space for breakout or office
- 56-inch plasma television with AppleTV
- Built-in break space

| <i>Event Space</i> | <i>SQ FT</i> | <i>Room Size</i> | <i>Ceiling</i> | <i>Conference</i> |
|--------------------|--------------|------------------|----------------|-------------------|
| Boardroom | 252 | 21 x 1226 | 9' | 10 |



1,800 Sq Ft

TWO-BEDROOM SUITE

Perfect for intimate gatherings and inspired meetings, Bobby Nashville's Two-Bedroom Suite is a creative alternative venue with a spacious patio and view.



- Private intimate meeting space
- Accommodates meetings + receptions up to 40 guests
- Outdoor balcony overlooking downtown Nashville
- Entertainment space including pool table, wet bar + record player

Event Space

SQ FT

Ceiling

Classroom

Conference

Two-Bedroom Suite

1,800

9'

10

10